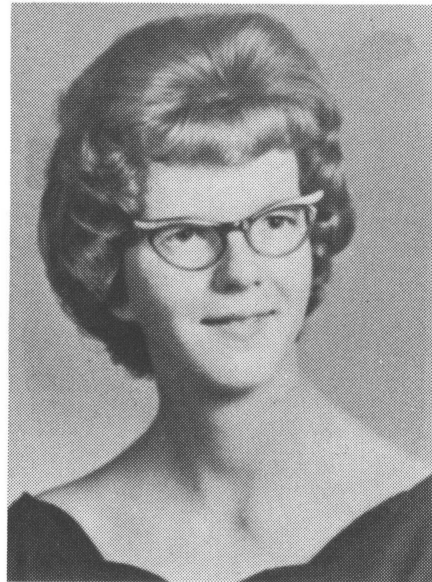


✓ HAROLD CLEE RALSTON  
 Hi-Y 2, 4; Football 2, 3, 4,  
 Lettered 3, 4; Basketball 2,  
 3, 4, Lettered 3; Track 2, 3,  
 4, Lettered 2, 3; A-Club 2,  
 3, 4.



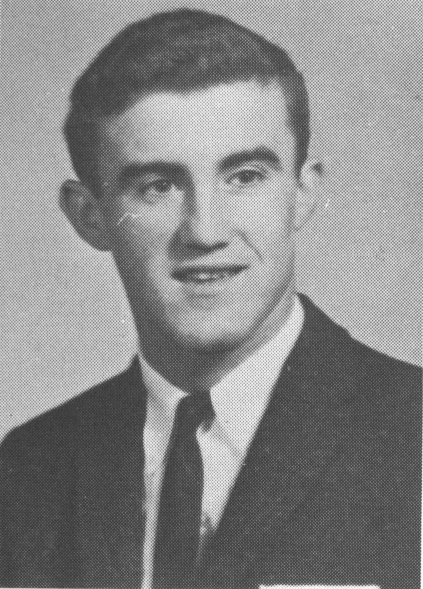
✓ DIANA KAY SEITZ  
 Pep Club 2, 3, 4, Lettered  
 3, 4; Oriole Staff 3, Bus-  
 iness Manager; Dramatics  
 Play 4; Y-Teen 2, 3, 4;  
 Augustan 4.



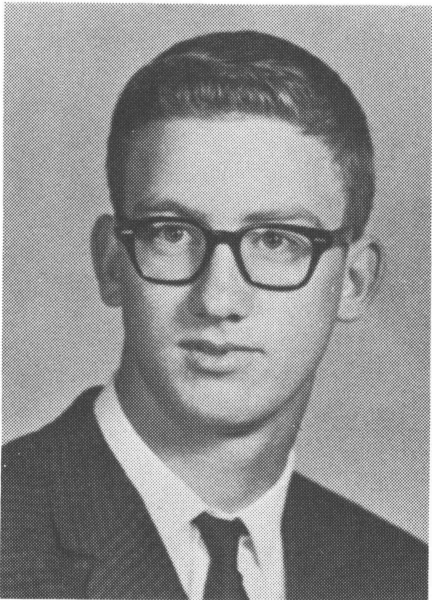
BETTY JEAN RODGERS



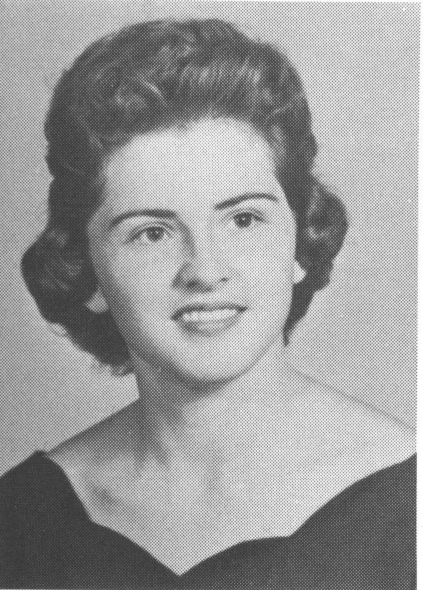
LOUISE ESTELLE  
 SIMPSON  
 Pep Club 2, 3, 4; Y-Teen  
 2, 3, 4, Pianist 3, Wor-  
 ship Chairman 4; Cheer  
 leader 2, 3, 4; Oriole  
 Staff, Business Manager  
 4; Band 2; Mixed Chorus  
 2, 3, Pianist 3; Science  
 Seminar 2; National  
 Honor Society 3, 4; Jun-  
 ior Play; Football Queen  
 4.



✓ CHARLES WILLIAM  
 RUMMELL, JR.  
 Pep Club 3, 4; Class Vice-  
 President 4; Football 2, 3, 4,  
 Lettered 3, 4; Track 2, 3, 4,  
 Lettered 3; A-Club 3, 4;  
 Intramurals 3, 4.



LARRY LEROY SMITH  
 Hi-Y 4; Football 2, 3;  
 Basketball 2; Track 2,  
 3, Lettered 2.



DOROTHY JAUNITA  
 RUSSELL  
 (Douglass High School,  
 Douglass, Kansas; Y-Teen  
 3; County Government,  
 Home Demonstration Agent  
 3; Football Queen Candidate;  
 Basketball Queen Candidate.)



SANDRA SUE SMITH  
 Pep Club 2, 3, 4, Let-  
 tered 3; Y-Teen 2, 3, 4;  
 Bible Club 3; Augustan  
 Salesman 4; Oriole Staff  
 Society Editor 3; Class  
 Secretary 4; Glee Club  
 2, 3, 4; Dramatics Plays  
 4; Junior Play.



✓ MARVIN EUGENE SCHILD  
 Hi-Y 3; Intramurals 3, 4.



KAROLYNN JANE  
 SMITHERMAN  
 Oriole Staff, Exchange  
 Editor 4; (Arkansas  
 City High School, Ar-  
 kansas City, Kansas;  
 Cheerleader 2; Pep  
 Club 2; Band 2; Y-Teens  
 2.) (Mount Carmel  
 Academy, Wichita,  
 Kansas; Art Guild 3;  
 Library Club 3.)