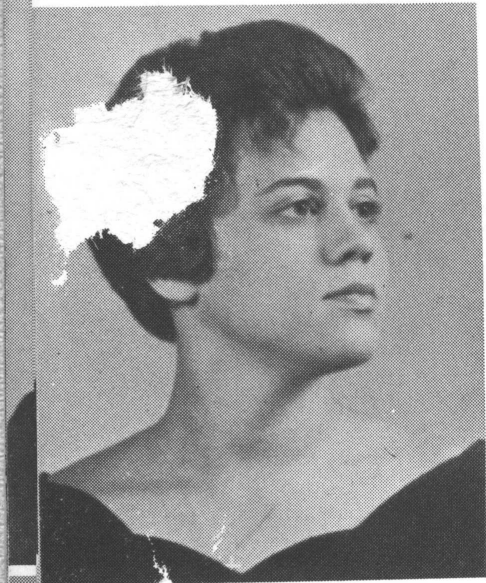


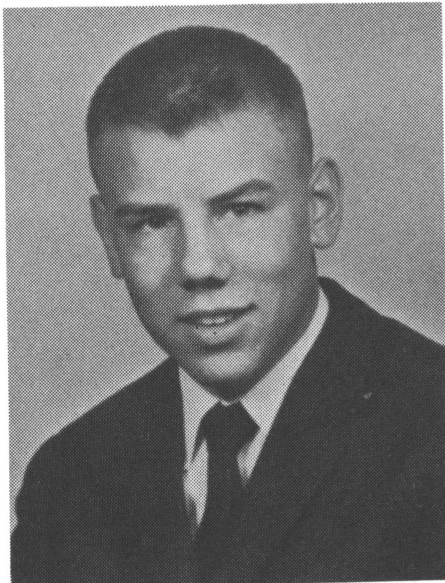
RONALD DEAN MULLIN  
Pep Club 4; Hi-Y 3, 4; Football 2, 3, Lettered 3; Track 2; Band 2, 3, 4.



VERNE THOMAS PALMER  
Student Council Representative 2; Hi-Y 2, 4; Football 2, 3, 4, Lettered 3, 4; Track 2, 3, 4, Lettered 3; Band 2, 3, 4; County Government, Sheriff 3; A-Club 4.



ROBIN ANN MUNROE  
Pep Club 2; Y-Teen 2, 3, 4; Augustan Salesman 4; Oriole Staff, Exchange Editor 3; Mixed Chorus 2; Dramatics Plays 4; Junior Play.



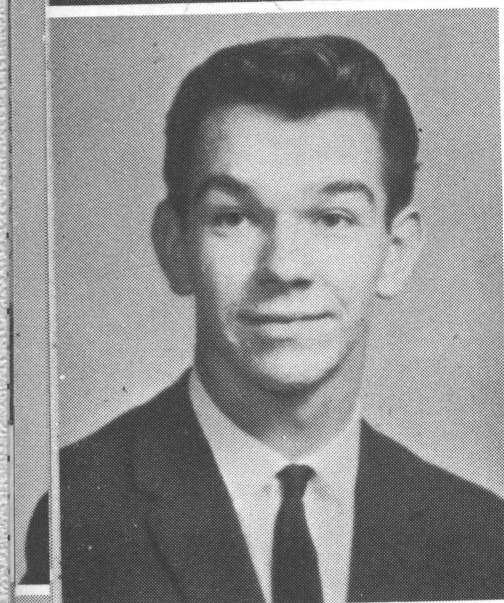
RONNIE CRAIG PENLAND  
Hi-Y 2, 3; Intramurals 2, 3, 4.



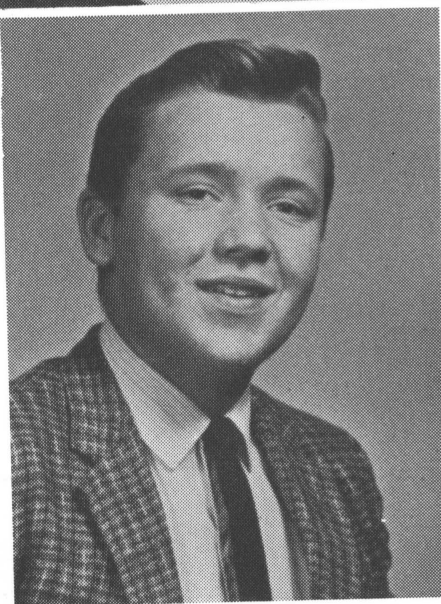
KATHLEEN CAROL NESLER  
Y-Teen 2; Glee Club 4.



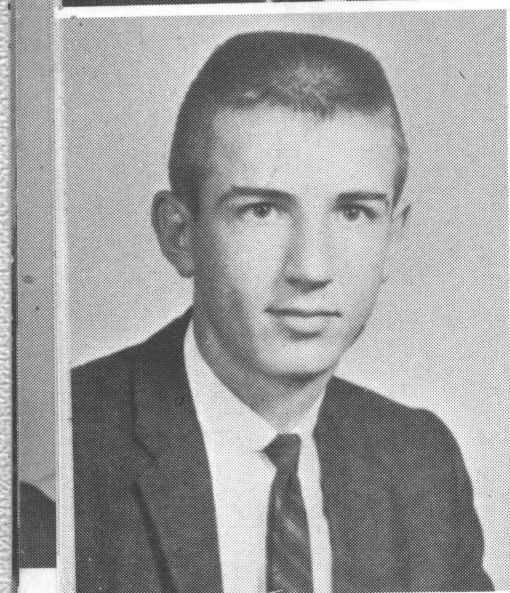
JOAN DIANE PERKINS  
Student Council Representative 2, 3, Treasurer 3; Pep Club 2, 3, 4, Lettered 3; Y-Teen 2, 3, 4, Sophomore Representative 2, Social Chairman 3, Finance Chairman 4; Augustan Salesman 4; Oriole Staff, Assistant Editor 3; National Honor Society 3; Mixed Chorus 2, 3; County Government, Clerk of the District Court 3; Girls' State Alternate 3; Junior Play.



KENNETH DARRELL  
OBENCHAIN  
Hi-Y 3, 4; (Harding High School, Oklahoma City, Oklahoma; Chess Club 2; Boys' Pep Club 3.)



DAVID MERRITT PHILLIPS  
Hi-Y 2; Oriole Staff, Assistant Circulation Manager 4; Tennis 3; Science Seminar 3; Intramurals 2.



JERRY LINDSEY O'DONNELL  
Pep Club 4; Hi-Y 2, 3, 4; Augustan Staff, Photographer 4; Tennis 2, 3, Lettered 3; Junior Play; Intramurals 2, 3, 4.



SHIRLEY MARIE PROCTOR  
Y-Teen 2, 3, 4.